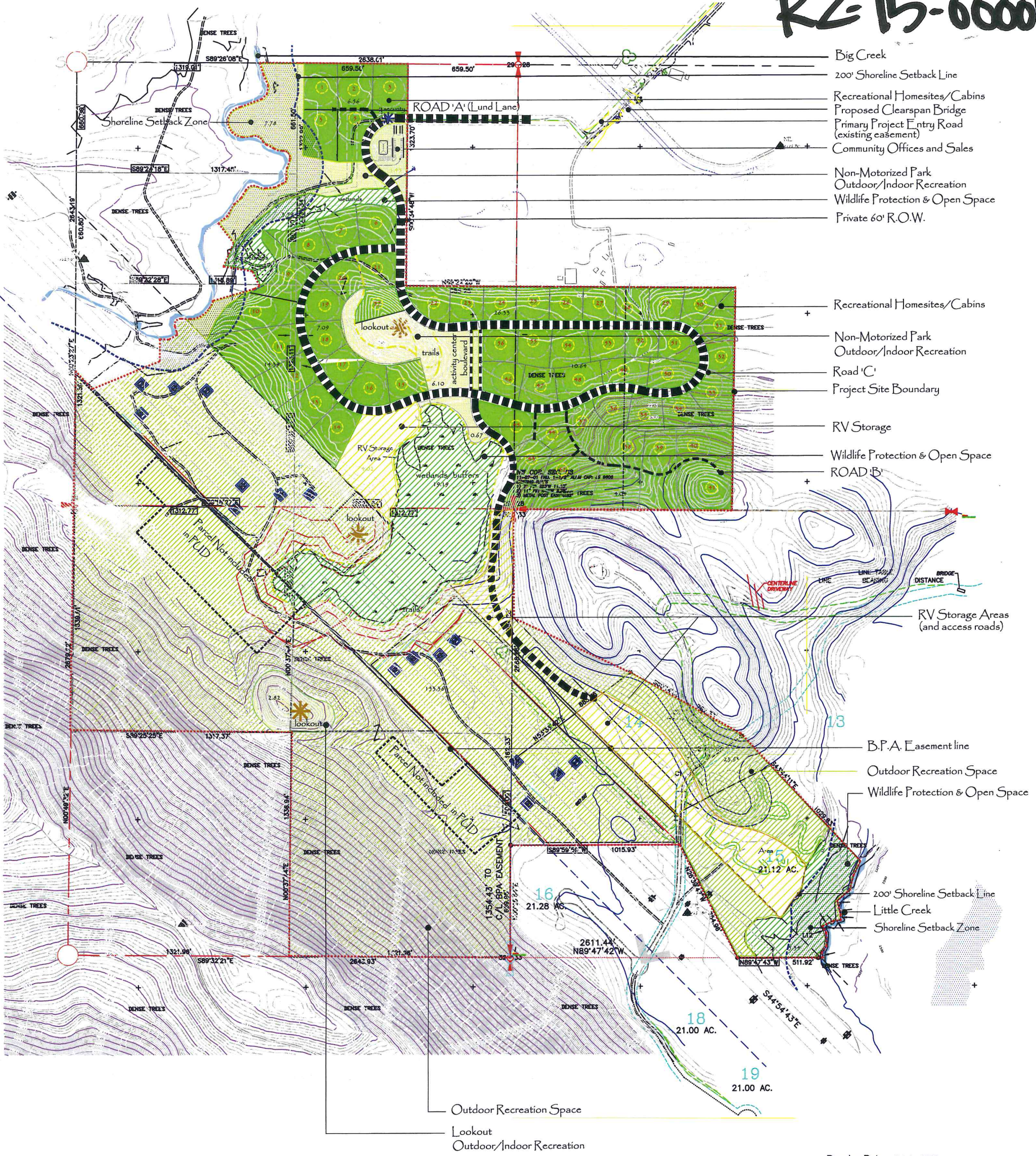


RZ-15-00001



- Big Creek
- 200' Shoreline Setback Line
- Recreational Homesites/Cabins
- Proposed Clearspan Bridge
- Primary Project Entry Road (existing easement)
- Community Offices and Sales
- Non-Motorized Park
- Outdoor/Indoor Recreation
- Wildlife Protection & Open Space
- Private 60' R.O.W.
- Recreational Homesites/Cabins
- Non-Motorized Park
- Outdoor/Indoor Recreation
- Road 'C'
- Project Site Boundary
- RV Storage
- Wildlife Protection & Open Space
- ROAD 'B'
- RV Storage Areas (and access roads)
- B.P.A. Easement line
- Outdoor Recreation Space
- Wildlife Protection & Open Space
- 200' Shoreline Setback Line
- Little Creek
- Shoreline Setback Zone
- Outdoor Recreation Space
- Lookout
- Outdoor/Indoor Recreation

Drawing Date: 5 July, 2016

North

Illustrative Master Plan
Big Creek
 A Planned Unit Development
 Kittitas County, Washington

KBA Design Group
 Kent Berryman, RLA
 3800 NE State Highway 104
 Poulsbo, Washington 98370
 360.620.4656 Email: KentBerryman@comcast.net www.kentberryman.com

RECEIVED
JUL 06 2016
KITTITAS COUNTY
CDS

LAND USE SUMMARY

Key	Land Use	Acres	% Site
	200' Shoreline Setback Line-no construction	12.6	4.4
	Recreational Homesites/Cabins	84.3	29.6
	Community Offices and Sales	1.5	0.1
	RV Storage	21.0	7.4
	60' R.O.W.	14.2	5.0
	Wildlife Protection & Open Space	28.5	10.0
	Non-Motorized Park- Outdoor/Indoor Recreation	11.4	4.0
	Outdoor Recreation Space	111.5	39.5
	Total	285.0	100.0

Homesites on 1+ acre lots. There are 57 proposed Homesites within the 285 acre project site (1 DU/5 acres)